

FD Preview Monitor

User's Guide

Revision from 18 April 2005
ForwardT Software 3.7.0

SoftLab-NSK, Ltd.

Notice

The information in this document is subject to change without prior notice in order to improve reliability, design, or function and does not represent a commitment on the part of this company.

In no event will we be liable for direct, indirect, special, incidental, or consequential damages arising out of the use or the inability to use the product or documentation, even if advised of the possibility of such damages.

Copyright © 1997 - 2005 SoftLab-NSK, Ltd.
All Rights Reserved.

No part of this reference manual may be reproduced or transmitted in any form or by any means without the prior written permission of this company.

Throughout this manual, we make reference to product names that are trademarks of other companies. We are using these names for identification purposes only, with no intention of infringement of the trademarks.

FCC Information

FCC ID:

This equipment has been tested and found to comply with the limits for a Class B digital device, pursuant to Part 15 of the FCC Rules. These limits are designed to provide reasonable protection against harmful interference in a residential installation. This equipment generates uses and can radiate radio frequency energy and, if not installed and used in accordance with the instructions, may cause harmful interference to radio communications. However, there is no guarantee that interference will not occur in a particular installation. If this equipment does cause harmful interference to radio or television reception, which can be determined by turning the equipment off and on, the user is encouraged to try to correct the interference by one or more of the following measures:

- Reorient or relocate the receiving antenna.
- Increase the separation between the equipment and receiver.
- Connect the equipment into an outlet on a circuit different from that to which the receiver is connected.
- Consult the dealer or an experienced radio/TV technician for help.

Shielded cables and I/O cards must be used for this equipment to comply with the relevant FCC regulations. Changes or modifications not expressly approved in writing by SoftLab-NSK, Ltd. may void the user's authority to operate this equipment.

Limited Warranty

Our company warrants this product against defects in materials and workmanship for a period of one year from the date of purchase. During the warranty period, products determined by us to be defective in form or function will be repaired or replaced at our option, at no charge. This warranty does not apply if the product has been damaged by accident, abuse, misuse, or as a result of service or modification other than by us.

This warranty is in lieu of any other warranty expressed or implied. In no event shall we be held liable for incidental or consequential damages, such as lost revenue or lost business opportunities arising from the purchase of this product.

Table of contents

TABLE OF CONTENTS	3
1 INTRODUCTION	4
2 MAIN WINDOW	5
2.1 Menu	6
3 START FROM COMMAND LINE	8

1 Introduction

In the *ForwardT Software* complete application *FDPreview Monitor* is delivered. This application allows viewing video data on output or input of any *FD300* hardware in Main Window of this program without use of the external TV-monitor.

2 Main Window

Main Window of this application at start is displayed on Figure 1.

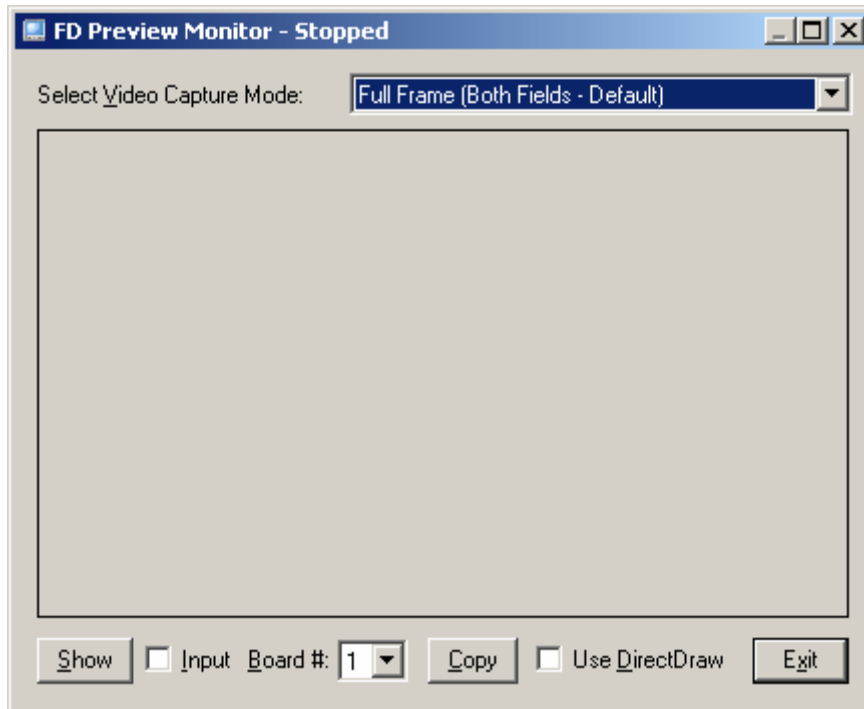


Figure 1. Main Window at start

In the drop-down list **Select Video Capture Mode** the video capture mode is selected.

Full Frame (Both Fields – Default)


full frame is captured and displayed (720x576 for PAL/SECAM, 720x480 for NTSC), that is both fields. This mode is switched on by default.

Top Field Only

only top (even) field is captured (720x288 for PAL/SECAM, 720x240 for NTSC); at display it is scaled to proportions of the full frame.

Bottom Field Only

only bottom (odd) field is captured (720x288 for PAL/SECAM, 720x240 for NTSC); at display it is scaled to proportions of the full frame.

 *The mode select is necessary for making before start of video display process!*

In the bottom of Main Window there are following elements:

- Show** pressing of this button starts process of video display. Before it is necessary to select a display mode, board's number and a capture mode – from input or output of board (see lower). For display stop press this button once again.
- Input** this option is switched on for viewing of input video, option is switched off for viewing of output video (by default).
- Board #** in this drop-down list board's number gets out.
- Copy** pressing of this button copies the current captured frame in standard format Bitmap (True Color, 24 bit) to the system *Clipboard*. The current frame or field is copied depending on the current mode of the display chosen in the list **Select Video Capture Mode** (see higher). Copying also can be carried out pressing of buttons **Ctrl+Ins** on the keyboard thus it is necessary that this window was chosen current.

☞ Just initial image is copied! Its size doesn't depend on the current size of application window. After that the image can be inserted from Clipboard to any graphic editor, for example, Paint, Photoshop etc.

UseDirectDraw switch on option for video display in overlay by *DirectDraw*. This mode allows to lower loading on the processor at display. For scaling hardware acceleration of a graphic card will be used.

☞ Attention: for use of overlay *DirectX* not below version 7.0 should be settled in system. Overlay can't work in some video modes of the display. If after switch on option **Overlay** and start of display by the button **Show** option **Overlay** was automatically switched off and became forbidden, it means, that the application did not manage to create overlay by *DirectDraw*. Try to replace display chromaticity, for example, with True Color on High Color or on the contrary, restart application *FDPreview Monitor* and try once again.

☞ Attention: At process of video display some options of the program become inaccessible.

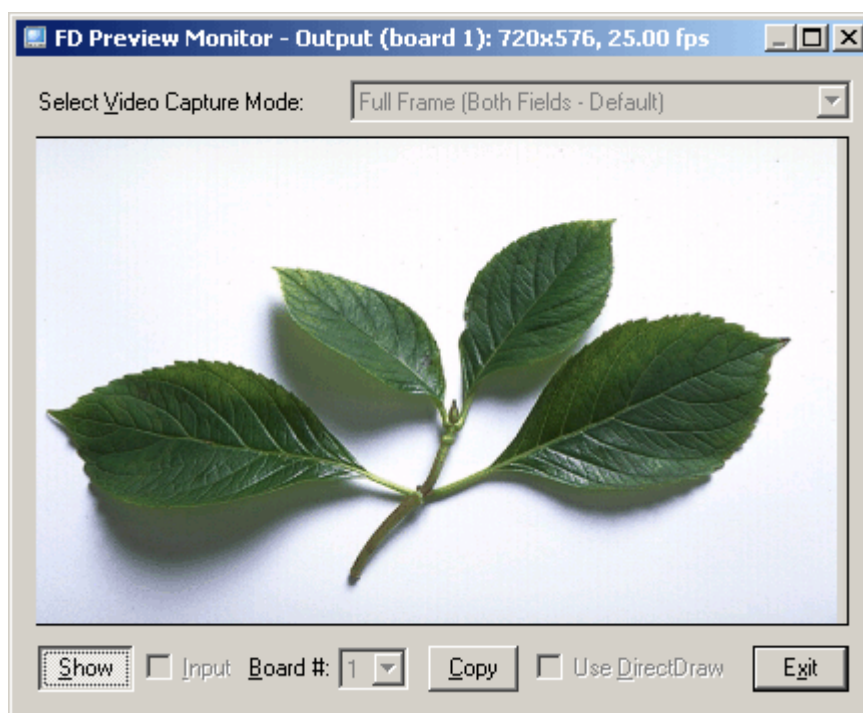


Figure 2. Main Window at showing stop

For change of these options press the button **Show** (Figure 2) to stop display. Change the necessary option and start display again.

2.1 Menu

Pressing of buttons **Alt+Gap** or click of the mouse left button on icon in the left top corner open menu with options:

Restore, Move, Size (Minimize, Maximize), Close (Alt+F4)

standard *Windows* commands;

Actual Size (x1)


show video of initial full screen size (720x576 for PAL/SECAM, 720x480 for NTSC);

Half Size (1/2)

show video in half screen size (360x288 for PAL/SECAM, 360x240 for NTSC);

Double Third Size (2/3)

show video in double third screen size (480x384 for PAL/SECAM, 480x320 for NTSC).

 *Attention: the window size changes only during video display! If to cause a command of change of the image size when display is not started (see below) real change of program window size will take place only on start of video display!*

Always on Top

program window always is atop of all windows of other programs.

English, Russian

select interface language. This option is inaccessible during process of video display.

About FD Preview Monitor

open dialog *About FD Preview Monitor*.


3 Start from Command Line

Application supports some commands at start from Command Line:

- input** show input and not board output;
- b1** board's number, for example, 1 (can be 2,3 etc);
- show** just show video after application start.

For example, at start of application from this Command Line display of the image will be started on input of the first hardware (number 1):

FDPreviewMonitor.exe – input -b1 –show

 *In any time moment at work of FD Preview Monitor it is possible to press button **F1** for open of dialog **About...** with a brief manual on using the application.*