

SLNewsLine



Program for Crawl Line Tasks
Creation in Automatic Mode

*Revision as of
November 18, 2009*

Quick Start

Notice

The information in this document is subject to change without prior notice in order to improve reliability, design, or function and does not represent a commitment on the part of this company.

In no event will we be liable for direct, indirect, special, incidental, or consequential damages arising out of the use or the inability to use the product or documentation, even if advised of the possibility of such damages.

Copyright © 1997 - 2010 SoftLab-NSK Ltd.
All Rights Reserved.

No part of this reference manual may be reproduced or transmitted in any form or by any means without the prior written permission of this company.

Throughout this manual, we make reference to product names that are trademarks of other companies. We are using these names for identification purposes only, with no intention of infringement of the trademarks.

FCC Information

FCC ID:

This equipment has been tested and found to comply with the limits for a Class B digital device, pursuant to Part 15 of the FCC Rules. These limits are designed to provide reasonable protection against harmful interference in a residential installation. This equipment generates uses and can radiate radio frequency energy and, if not installed and used in accordance with the instructions, may cause harmful interference to radio communications. However, there is no guarantee that interference will not occur in a particular installation. If this equipment does cause harmful interference to radio or television reception, which can be determined by turning the equipment off and on, the user is encouraged to try to correct the interference by one or more of the following measures:

Reorient or relocate the receiving antenna.

Increase the separation between the equipment and receiver.

Connect the equipment into an outlet on a circuit different from that to which the receiver is connected.

Consult the dealer or an experienced radio/TV technician for help.

Shielded cables and I/O cards must be used for this equipment to comply with the relevant FCC regulations. Changes or modifications not expressly approved in writing by SoftLab-NSK Ltd. may void the user's authority to operate this equipment.

Limited Warranty

Our company warrants this product against defects in materials and workmanship for a period of one year from the date of purchase. During the warranty period, products determined by us to be defective in form or function will be repaired or replaced at our option, at no charge. This warranty does not apply if the product has been damaged by accident, abuse, misuse, or as a result of service or modification other than by us.

This warranty is in lieu of any other warranty expressed or implied. In no event shall we be held liable for incidental or consequential damages, such as lost revenue or lost business opportunities arising from the purchase of this product.

Table of Contents

Introduction.....	4
General Workflow.....	5
Launch of the Program and Creation of the Project (Step 1).....	6
Creation of Text Generators (Step 2).....	7
1. Date.....	7
2. Time	9
3. Picture Link	11
4. Text.....	13
5. RSS News.....	14
Creation of the Task for Scrollable Crawl Line (Step 3).....	17
Control Over Task Performance (Step 4).....	20





Introduction

The SLNewsLine program is designed for creating tasks for scrollable crawl line in automatic mode. The task is based on data received from different sources.

The sources can be the following:

- RSS news;
- weather stations;
- text files;
- system clock;
- graphic files.

One task may contain data from different sources. There is also a possibility to create several tasks for different scrollable crawl lines simultaneously.



General Workflow

This section contains information on how the SLNewsLine program can be used if it is necessary to display scrollable crawl line by giving an example. Let it is necessary to display the following information in crawl line in the given order: current date, current time, picture, the text of the latest news.

Complete the following steps to prepare the task for scrollable crawl line via the SLNewsLine program:

1. Launch the program and create a project.
2. Create necessary text generators.
3. Create the task based on created text generators.
4. Start the task and check its performance in the FDTitleDesigner program.

Complete the following steps for specified information to be displayed in the scrollable crawl line:

1. Load title project with the RollCrawl title element in the FDO nAir program.
2. Start prepared task in the SLNewsLine program.
3. Launch playback of scrollable crawl line at specified time in the FDO nAir program either manually via control buttons or according to the schedule.

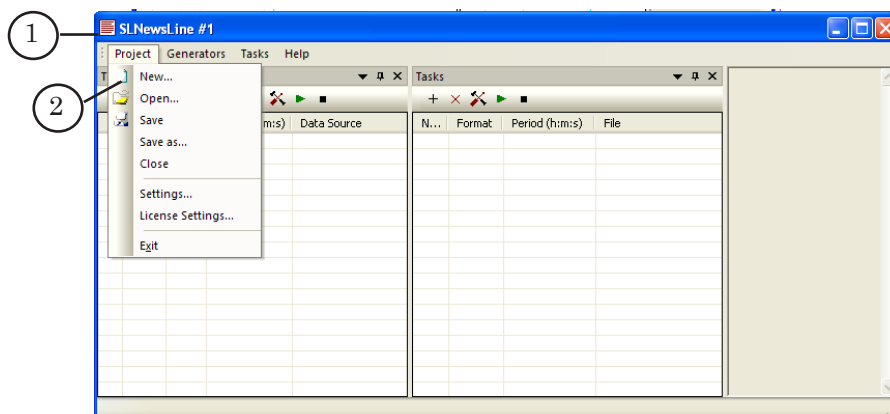


Tip: It is recommended to study the example included in the SLNewsLine program package. The example is located in the ~\Plugins\SLNewsLine\Sample folder, where ~ denotes a full path to the folder where the ForwardT Software is installed.

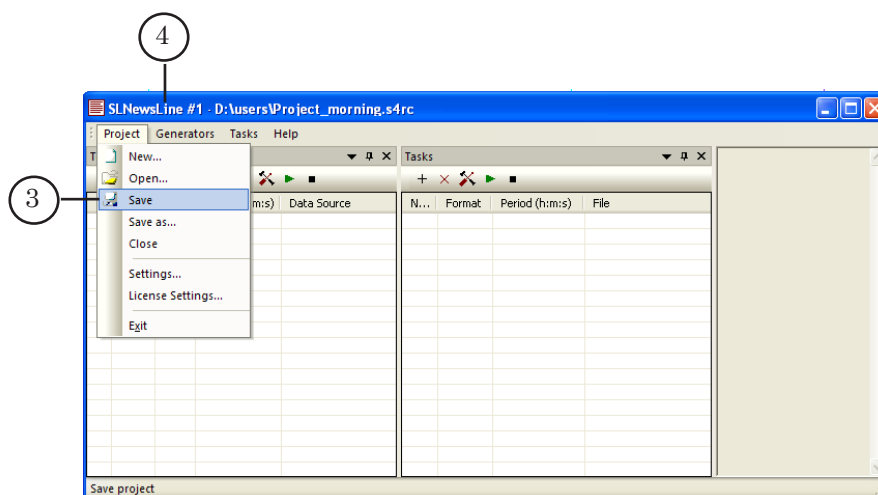


Launch of the Program and Creation of the Project (Step 1)

1. Launch the SLNewsLine program (1) via the Start menu command: Programs > ForwardT Software > Plugins > News Line.
2. Select Project > New... from main program menu (2).



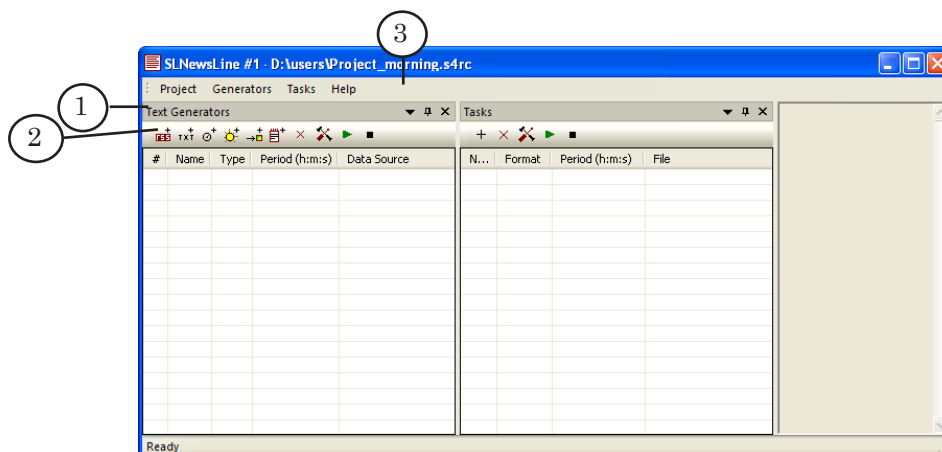
3. Specify a folder and project name in the Create new project window, e.g. Project_morning. Then click Save.
4. Save all changes made in the project via the Project > Save command (3).
5. A full path to the project will be displayed in the main window title bar (4).





Creation of Text Generators (Step 2)

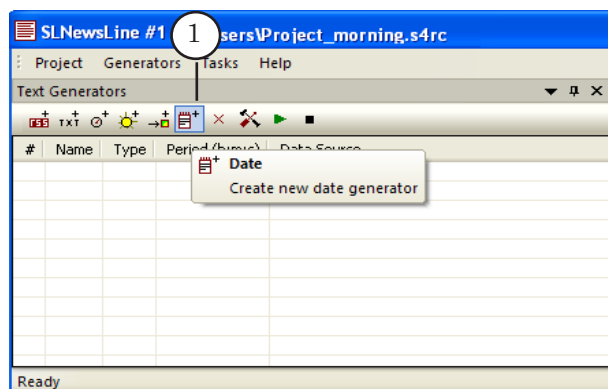
Creation and configuration of text generators are implemented in the Text Generators window (1). Use the toolbar buttons (2) or the Generators menu (3) to create generators.



1. Date

Complete the following steps to create a new generator of actual date:

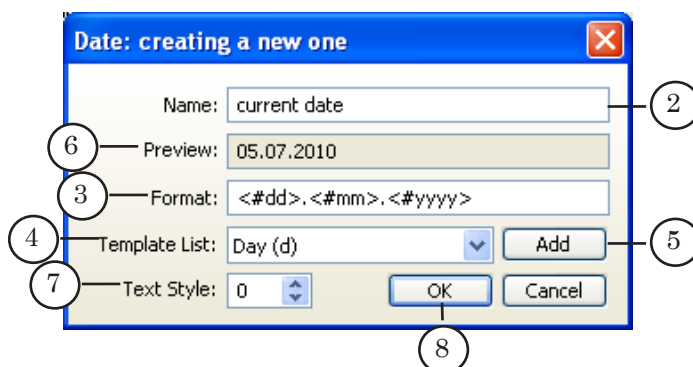
1. Click the Date button (1).





Configure the following parameters in the Date: creating a new one window:

2. Specify generator name in the Name text field (2).



3. Configure the format of date representation by selecting the type of displayed information, the format and its order in the crawl line. Configuration is made in the Format field (3). Add necessary tags in the field in the desired order. It is also possible to use free symbols, e.g. point or space besides tags. To add the tag:

1. Select the type of information from the Template List drop-down list (4).
2. Click Add (5).

The following default format of the date is in our example:

<#dd>.<#mm>.<#yyyy>.

- <#dd> denotes the day;
- <#mm> denotes the month;
- <#yyyy> denotes the year.

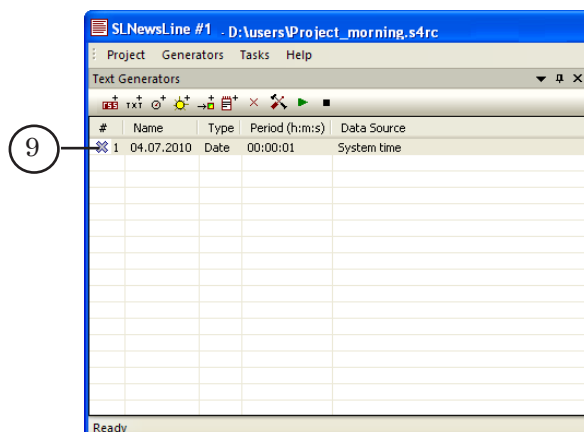
4. Actual date in the specified format is displayed in the Preview field (6):
5. Select font style in the Text Style field (7) for date designing in the scrollable crawl line.

Note: Font styles are stored in EFC file. EFC file is created in the Forward Titling program (for more information on font styles collection, see the «ForwardTitling: Graphic Editor. User's Guide»). Select the file with font styles collection in the FDTITLEDesigner program when configuring of the settings of scrollable crawl line title element is implemented (for more information on this item, see the «FDTITLE Designer: Title Project Editor. User's Guide»).

6. Click OK (8) to apply the settings and to close the window.



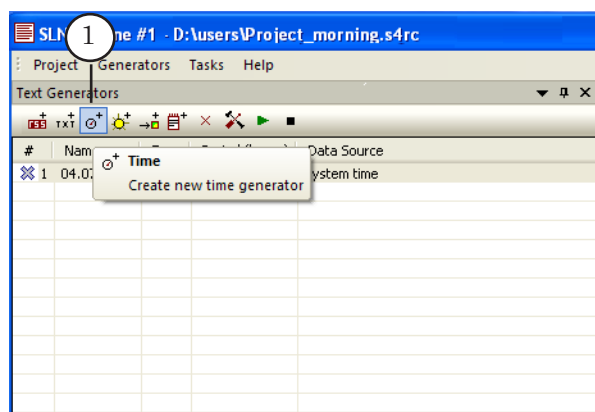
7. New generator is added to the table (9).



2. Time

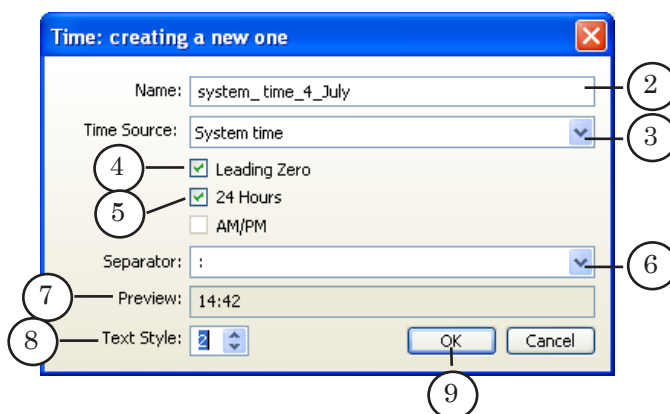
Complete the following steps to create a new generator of text string with actual time:

1. Click the Time button (1).



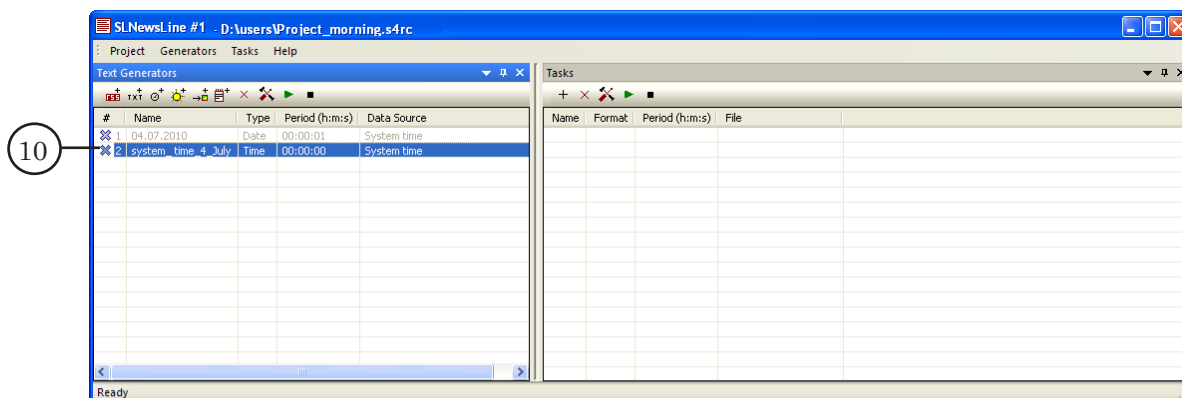
Configure the following parameters in the Time: Creating a new one window.

2. Specify generator name in the Name text field (2).





3. Select time source from the Time Source drop-down list (3), e.g. System time. In this case the source will be system clock.
4. Set parameters of time displaying, e.g.:
 1. Put the Leading Zero mark (4) to display zero at the beginning of numbers that contain 1 digit, e.g. 04:30.
 2. Put the 24 Hours mark (5) to display the time in the 24 hour format.
 3. Select a separator of hour and minute values from the Separator drop-down list (6), e.g. colon.
5. Time in the specified format is displayed in the Preview field (7).
6. Select font style according to the index in the Text Style field (8). Selected style will be used for designing time displayed in the scrollable crawl line.
7. Click OK (9) to apply all settings and to close the window.
8. New generator is added to the list (10).



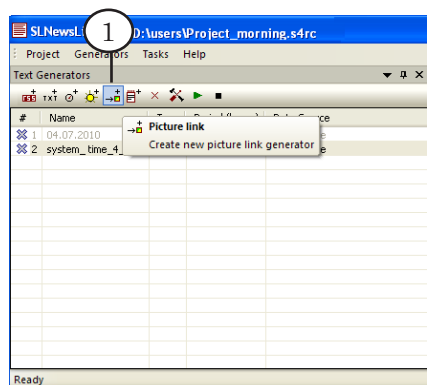


3. Picture Link

Note: SPT file with the task for scrollable crawl line contains a link to a graphic file, not the picture itself.

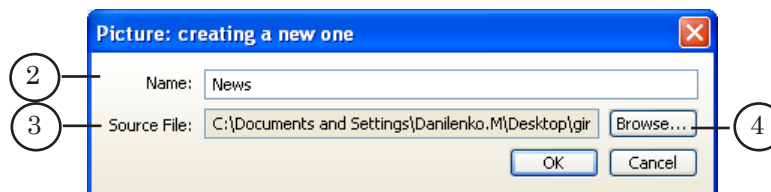
Complete the following steps to create generator of a new picture link:

1. Click the Picture Link button (1).



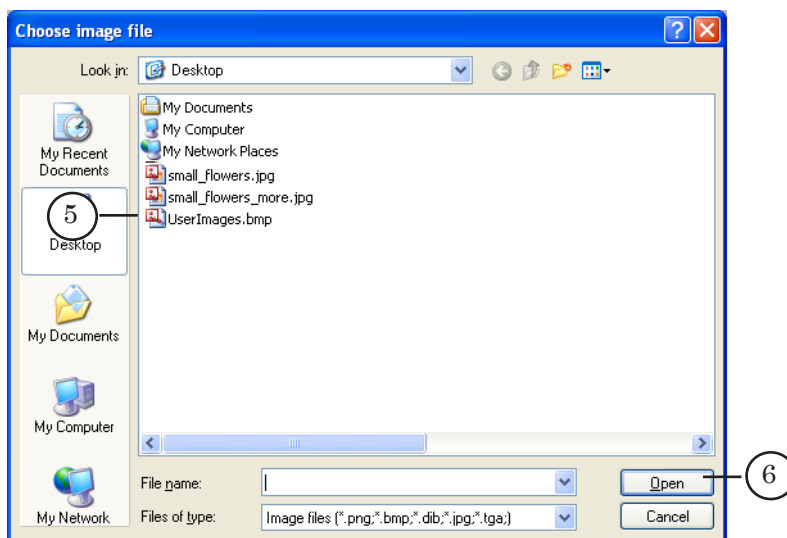
Configure the following parameters in the Picture: creating a new one window:

2. Specify generator name in the Name text field (2).
3. Specify a full path to graphic file in the Source File field (3) where desired picture is located. Click Browse... (4) to open the window for selecting the file.

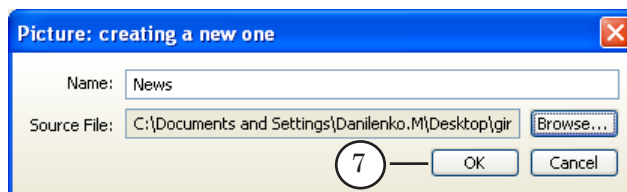




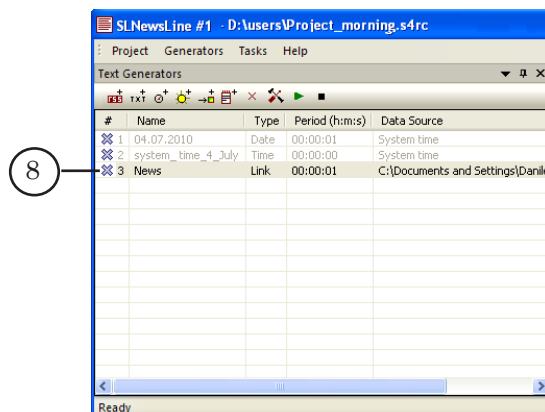
4. Select desired file (5) in the appeared window and click Open (6).



5. Click OK (7) to apply the settings and to close the window.



6. New generator (8) is added to the table.

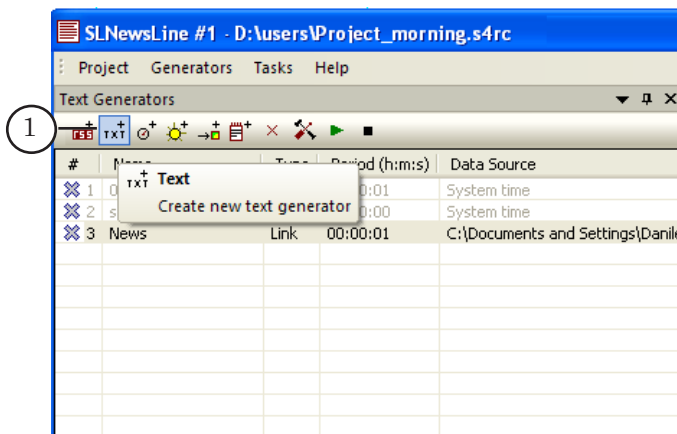




4. Text

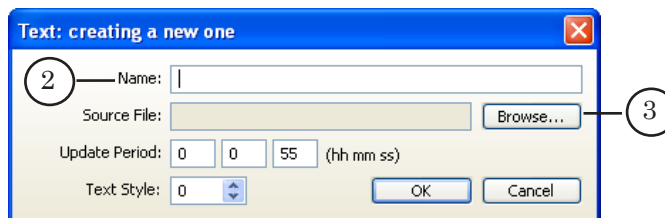
Complete the following steps to create new text generator of information from text file:

1. Click the Text button (1).

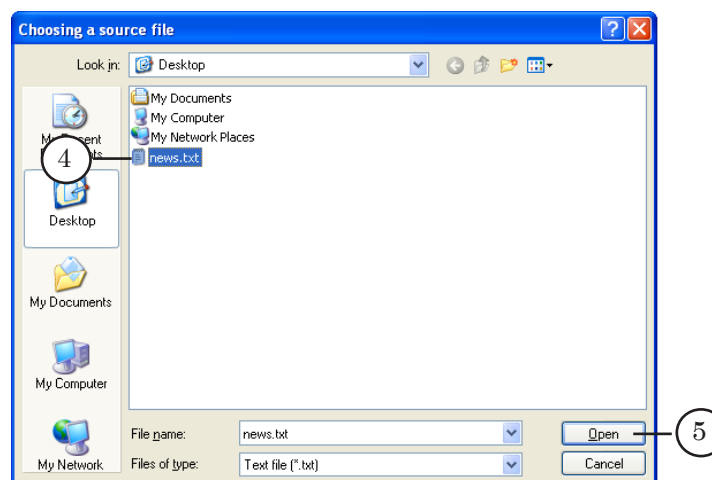


Configure the following parameters in the Text: creating a new one window:

2. Specify generator name in the Name field (2).
3. Specify the text to be shown in the scrollable crawl line. Click Browse... (3) to select this text file.

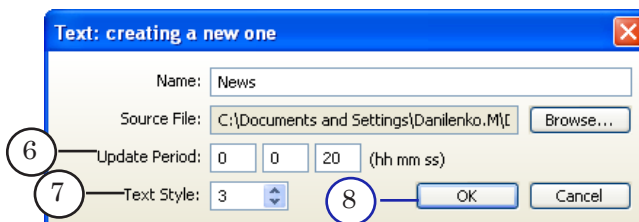


4. Select desired file (4) and click Open (5).

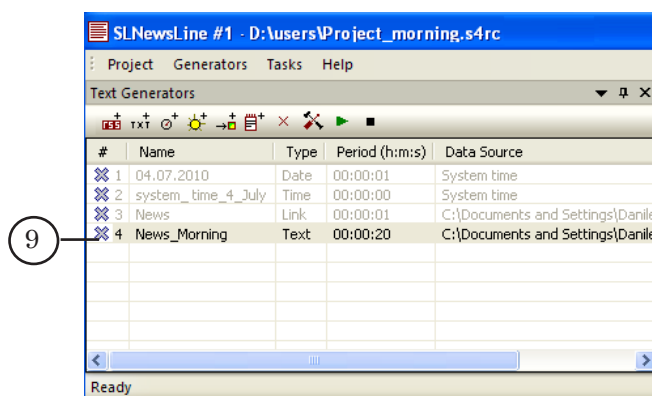




5. Specify the interval in the hh:mm:ss format in the Update Period text field (6). Information from text file will be updated in specified interval of time.
6. Select font style in the Text Style field (7). Specified font will be used for designing the text in the scrollable crawl line.
7. Click OK (8) to apply the settings and to close the window.



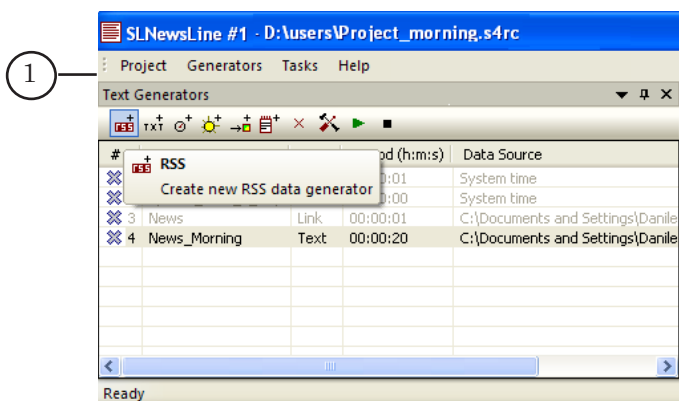
8. New generator is added to the table (9).



5. RSS News

Complete the following steps to create new generator of RSS data:

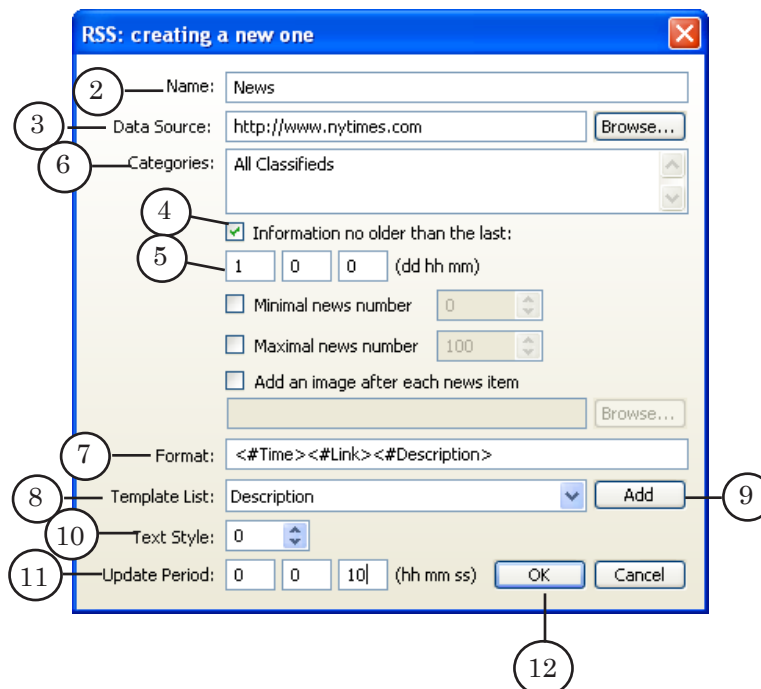
1. Click the RSS button (1).





Configure the following parameters in the RSS: creating a new one window (1).

2. Specify generator name in the Name field (2).



3. Specify URL in the Data Source field (3).

4. Specify reviewed period. The news only from this time period will be taken. To assign this period:

1. Put the Information no older than the last mark (4).
2. Specify desired time in the following format: Days:Hours:Minutes, e.g. 1 day (5).

5. Specify filter for selection of news referred to specified categories. Specify these categories in the Categories field (6).



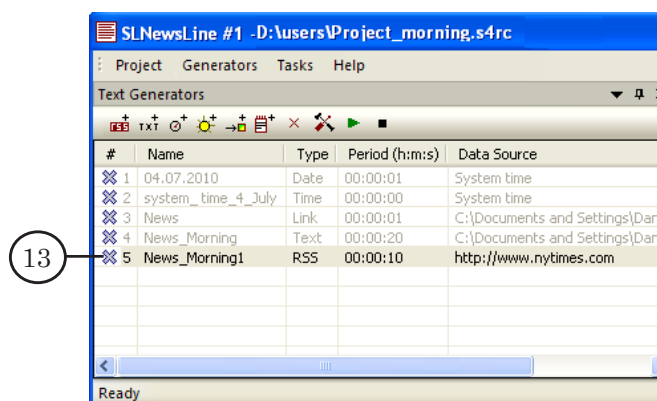
Tip: Elements that are specified have the category name.

6. Configure the format of displaying the news in the Format field (7) by specifying the type of information selected from RSS feed and its order in the crawl line. Add tags with names of RSS elements from which necessary information should be selected. This information will be displayed in scrollable crawl line.

1. Select type of the element from the Template List drop-down list (8).
2. Click Add (9).



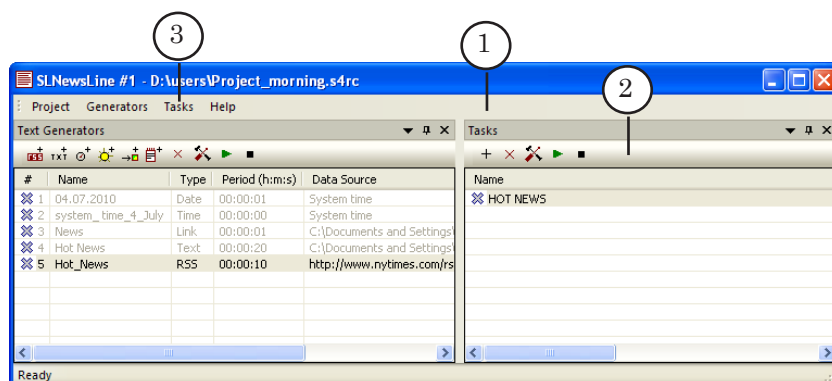
7. Select font style in the Text Style field (10). Specified font will be used for designing information displayed in scrollable crawl line.
8. Specify update period, i.e. time of request to the site, in the following format:
hh:mm:ss (11).
9. Click OK (12) to apply the settings and to close the window.
10. New generator is added to the list (13).





Creation of the Task for Scrollable Crawl Line (Step 3)

Creation and configuration of task for scrollable crawl line are implemented in the Tasks window (1) via toolbar buttons (2) or commands of the Tasks menu (3).

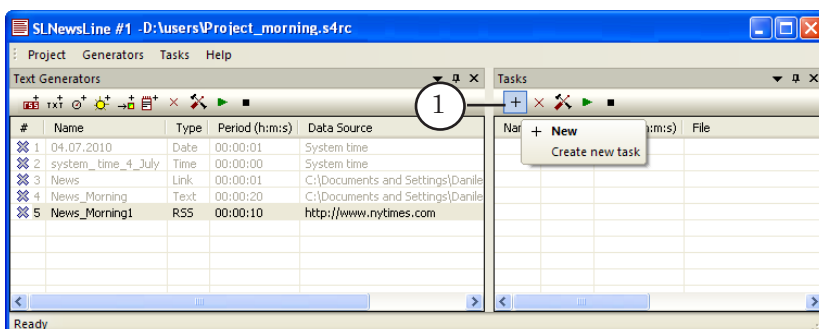


The task in the SLNewsLine program window is presented in the format of line. The line may contain free symbols and tags with the numbers of used text generators.

Let it is necessary to create the task for scrollable crawl line as it is shown below:



1. Click New (1).





Configure the following parameters in the Task: creating a new one window:

2. Give the name for the task in the Name text field (2).



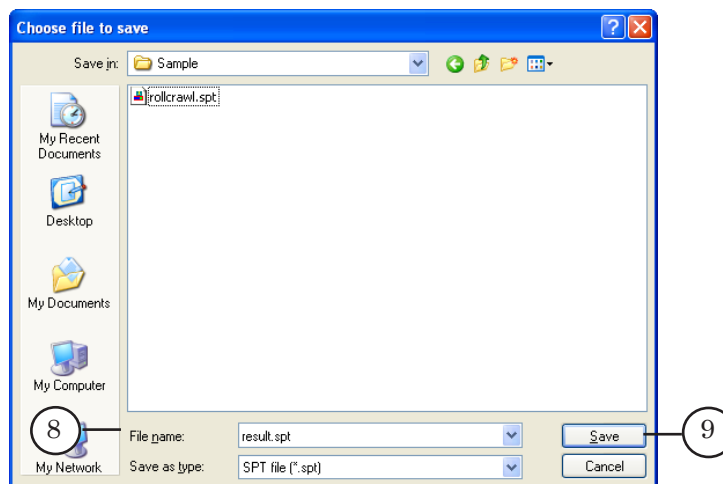
3. Create the task string in the Text Format field. It may contain free text and tags with serial number of text generator:
 1. Type the text that will be displayed before the date and RSS news in scrollable crawl line, e.g. «Today» and «Hot News» respectively (3).
 2. To add tags that contain indices of used text generators: Set the cursor in required area to add the tag. Select necessary generator from the Text Generators drop-down list (4) according to its name. Then click Add (5).



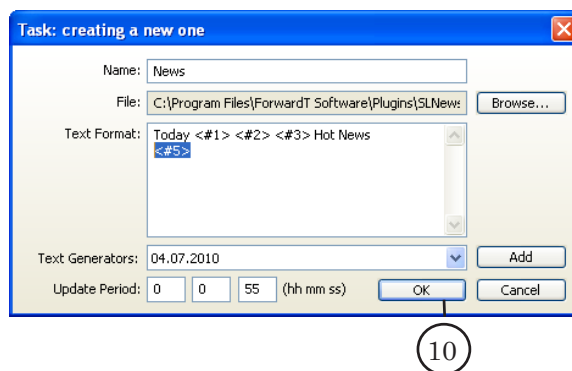
4. Specify update period in the task file according to the hh: mm: ss format (6).
5. Click Browse... (7) to specify the name of the SPT file for scrollable crawl line.



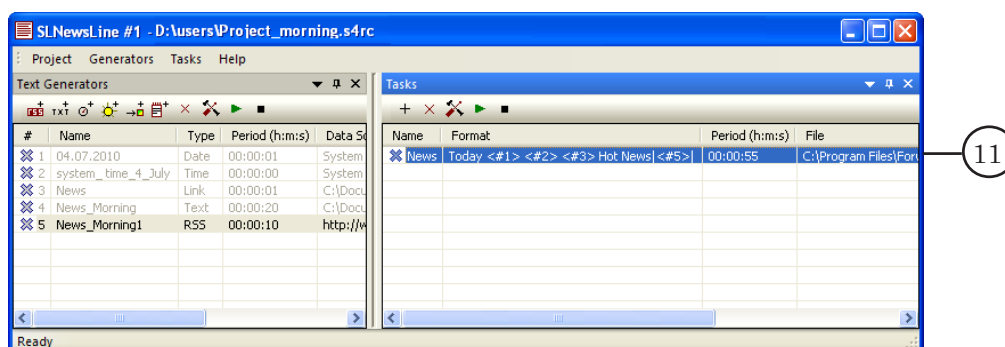
6. Select the folder in the Choose file to save window and name the file (8). Then click Save (9).



7. Click OK (10) to apply the settings and to close the window.



8. New task is added to the Tasks window (11).



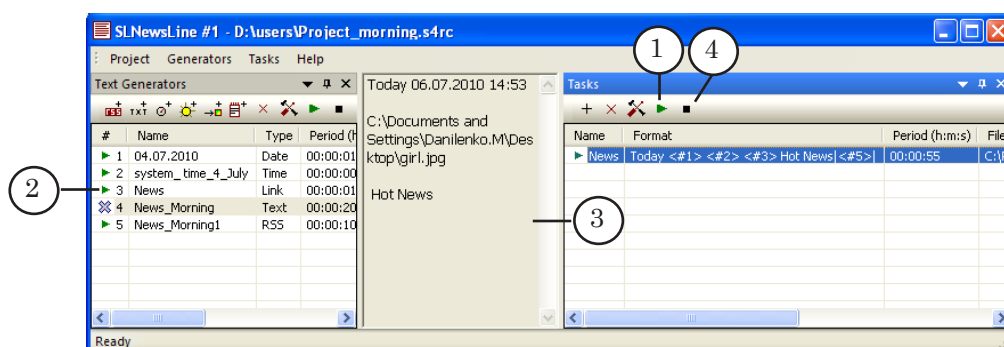
✓ **Important:** SPT file with the task appears in the selected folder only after the first start of the task performance.



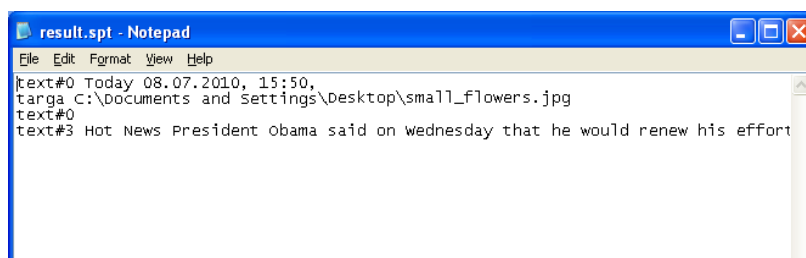
Control Over Task Performance (Step 4)

Start the task to record actual information in the SPT file for scrollable crawl line.

1. Select desired task in the Tasks window and click Start (1) to start the task.
2. All text generators of the selected task will be started automatically. The state of text generators will be displayed by indication (2).
3. The content of the task is displayed in view area (3).
4. Click Stop (4) to stop the task.



5. The picture below presents SPT file with the task for crawl line opened in Notepad.



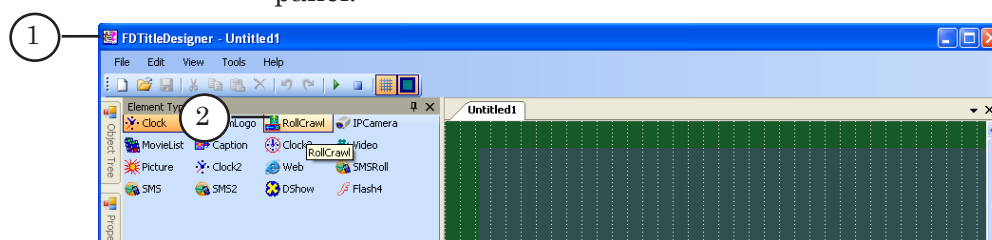


Task performance can be checked via the FDTITLEDesigner program.

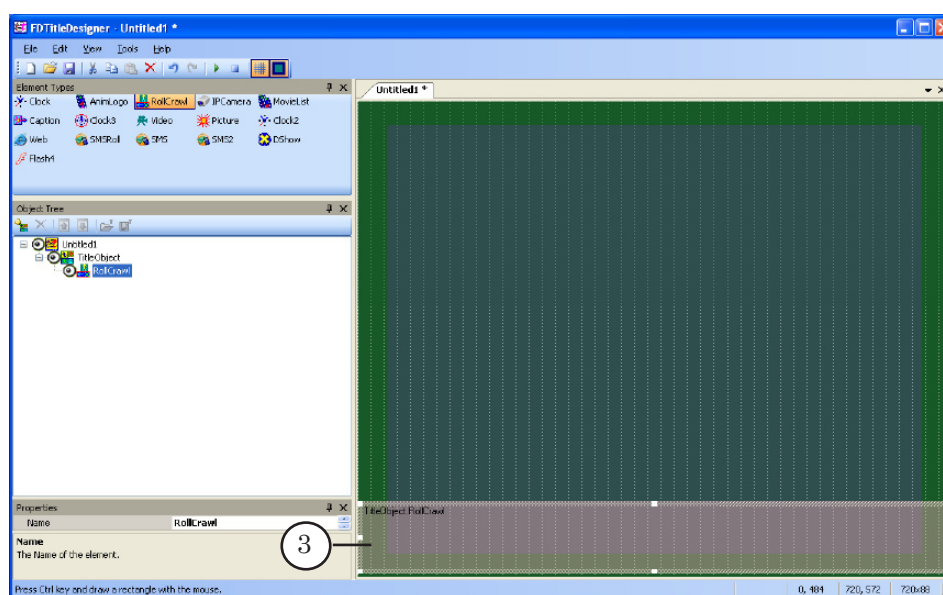
1. Launch the FDTITLEDesigner application (1) via either the Start menu command: Programs > ForwardT Software > Titles > Title Designer or program shortcut.

Add the RollCrawl title element to the project. To do so:

2. Click the RollCrawl button (2) located on the Element Types panel.



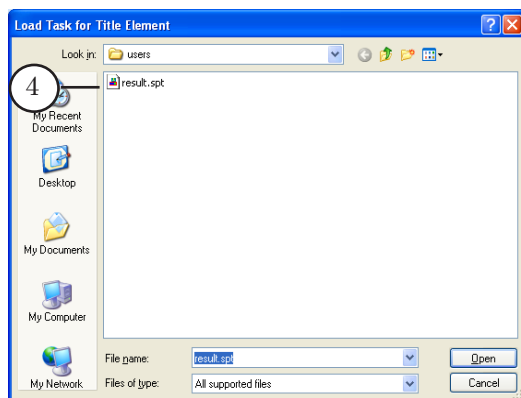
3. Drag the pointer to the project workarea where title element will be located. Press the mouse button, then move it diagonally with releasing (3).



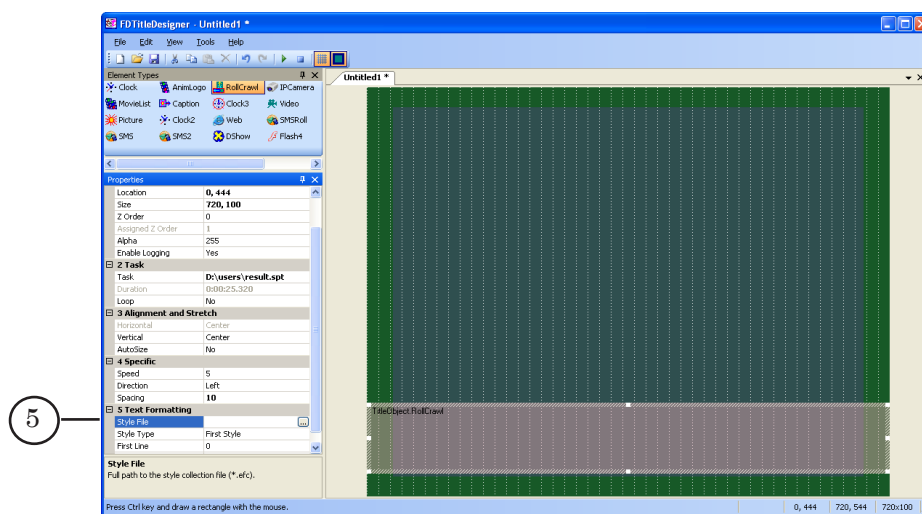


Configure title element parameters:

4. Double-click title element located in the project workarea to open the window for selecting file with the task.
5. Select the task file created via the SLNewsLine program in the appeared window, Result.spt (4) in our example.

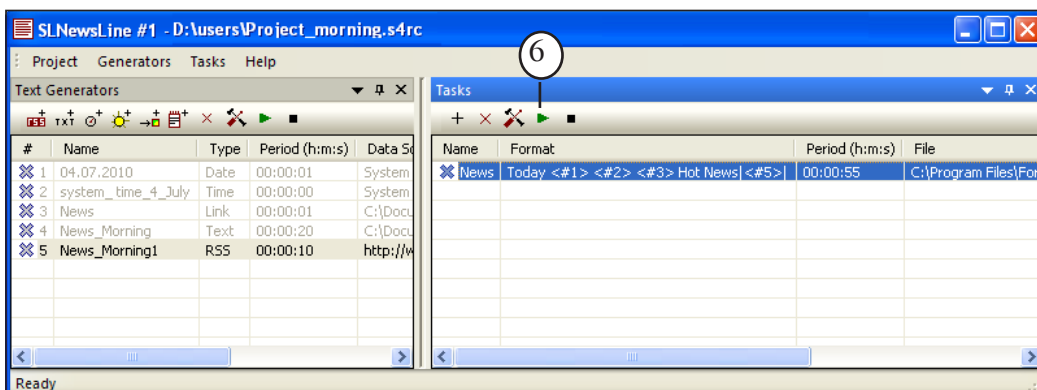


6. Specify a full path to the file with font styles collection, i.e. EFC file in the Text Formatting field (5).

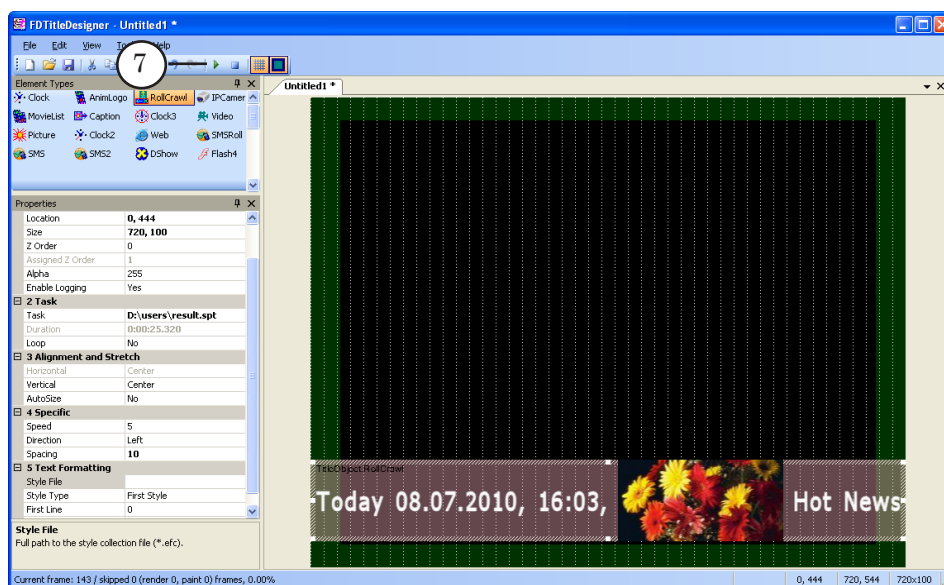




7. Start the task for scrollable crawl line by clicking Start (6) in the SLNewsLine program window.



8. Toggle the Start Preview mode (7) in the FDTITLEDesigner program.
9. Information selected according to assigned task and configured settings will be displayed in scrollable crawl line. The information will be updated in periods specified in the settings of the task in the SLNewsLine program.



✓ **Important:** Start corresponding task in the SLNewsLine program to display actual information.



Useful Links

ForwardT Software set: description, download, documentation, solutions

<http://www.softlab-nsk.com/forward/index.html>

Support

e-mail: forward@sl.iae.nsk.su

forward@softlab-nsk.com

forward@softlab.tv

Forum

<http://www.softlab-nsk.com/forum> (currently available in Russian only)

Translation from
22 September, 2010

© Soft-LabNSK
